

# DO YOUR PART, MANAGE CLOSE CONTACTS

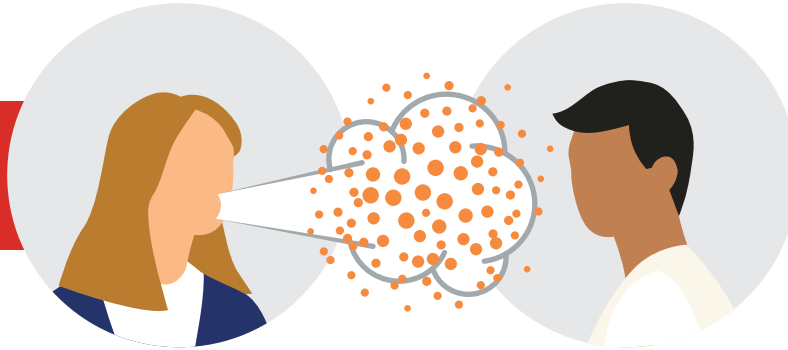
## DEFINING CLOSE CONTACT

A person **within 6ft/2m** of another person for a sustained period of **10 minutes or more**.

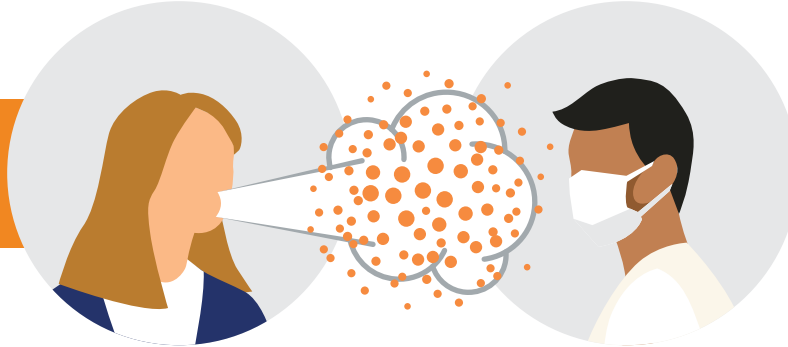


## RISK LEVEL

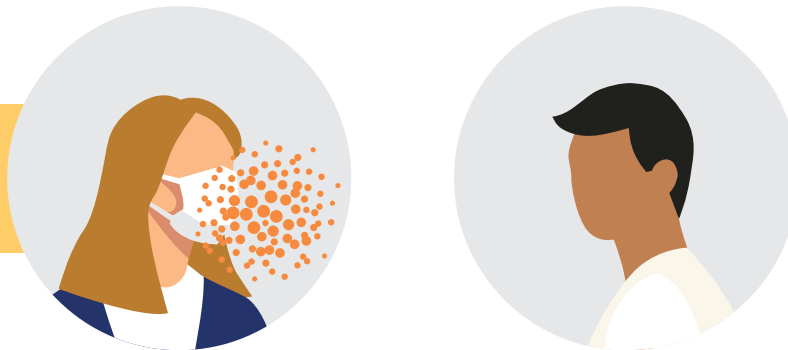
**Very High**



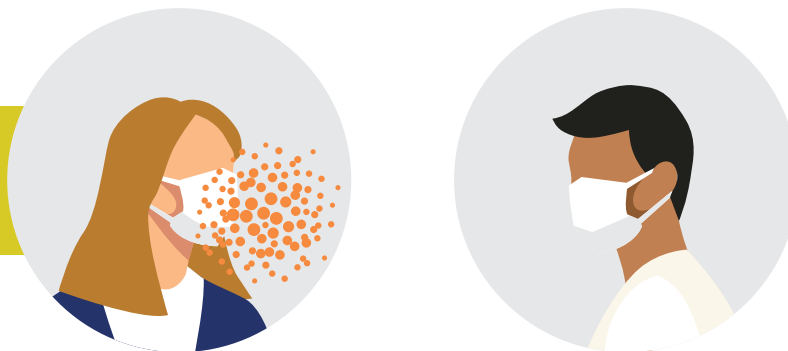
**High**



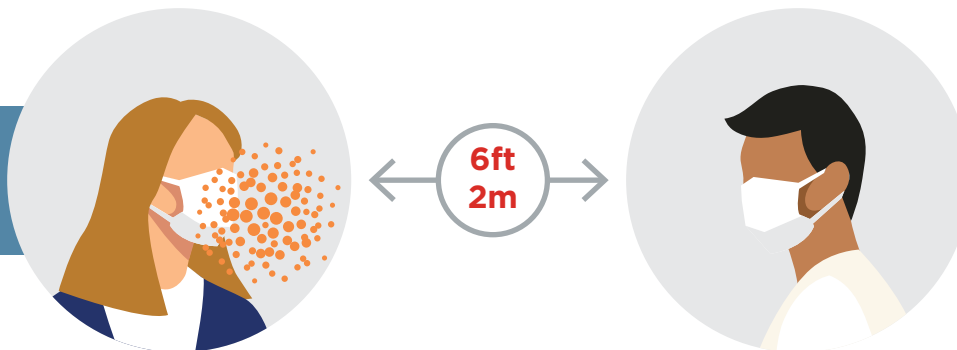
**Medium**



**Low**



**Very Low**



In these scenarios, if a person is COVID-19 positive, the other person should self-quarantine for 14 days.

In this scenario, if a person is COVID-19 positive, there is no need to self-quarantine if surgical, KN95 or N95 masks are used.

In this scenario, there is no need to self-quarantine.

## CLOSE CONTACT TRACING

If an employee tests positive or is presumed positive by a physician, others in close contact within 72 hours/3 days prior to symptom onset will be notified and advised to self-quarantine. Asymptomatic employees who test positive will need to identify those in close contact within 72 hours/3 days prior to date of testing.

## STAY INFORMED

Keep up-to-date with the latest communications from the CoorsTek Leadership Team regarding COVID-19.

Refer to the CORONAVIRUS (COVID-19) EMPLOYEE INFORMATION CENTER - <http://www.coorstek.com/covid> - for additional information, guidance, and protocols.