

DO YOUR PART, MANAGE CLOSE CONTACTS

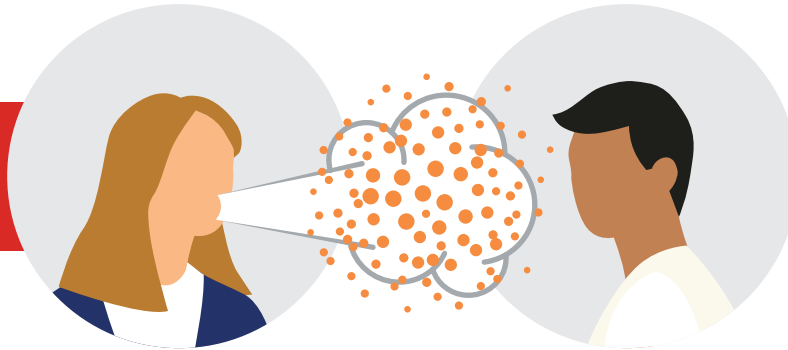
DEFINING CLOSE CONTACT

A person **within 6ft/2m** of another person for a sustained period of **10 minutes or more**.

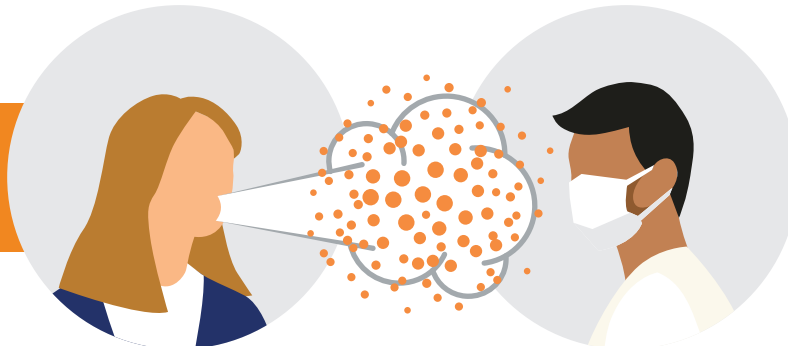


RISK LEVEL

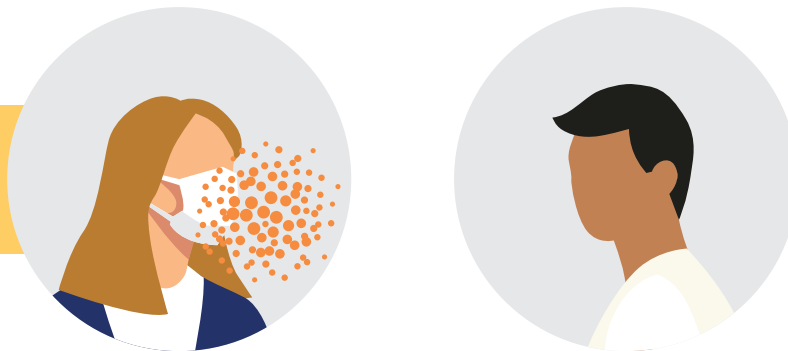
Very High



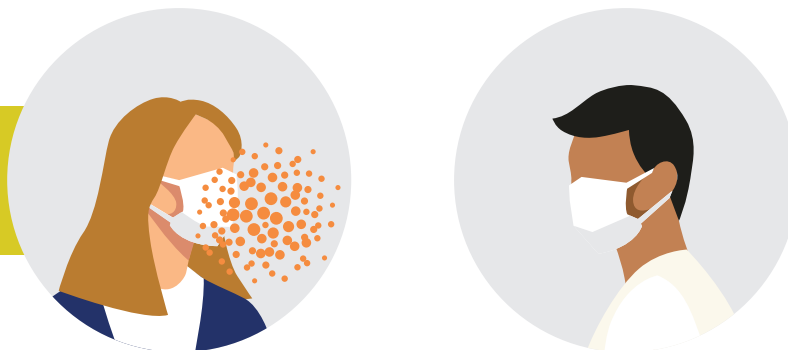
High



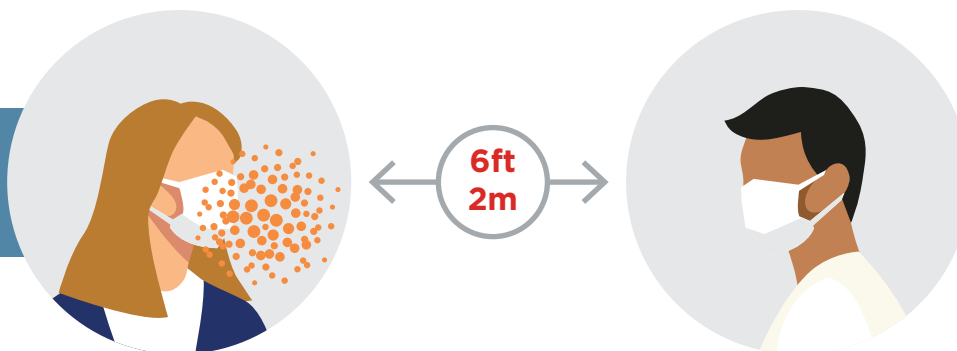
Medium



Low



Very Low



In these scenarios, if a person is COVID-19 positive, the other person should self-quarantine for 14 days.

In this scenario, if a person is COVID-19 positive, there is no need to self-quarantine if surgical, KN95 or N95 masks are used.

In this scenario, there is no need to self-quarantine.

CLOSE CONTACT TRACING

If an employee tests positive or is presumed positive by a physician, others in close contact within 72 hours/3 days prior to symptom onset will be notified and advised to self-quarantine. Asymptomatic employees who test positive will need to identify those in close contact within 10 days prior to date of testing.

COURTESY OF COORSTEK, INC.